



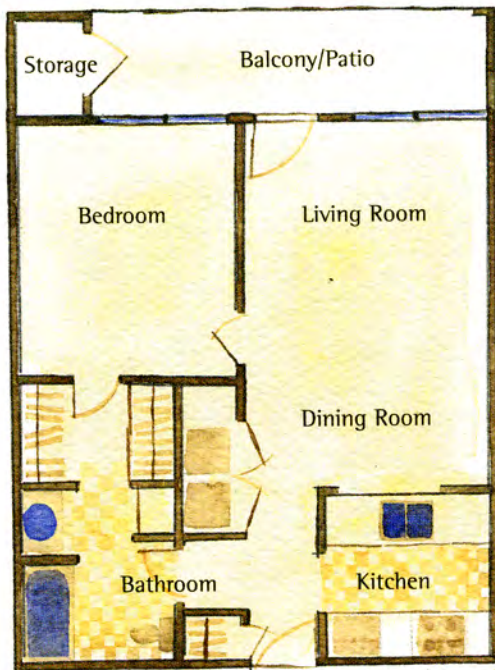
Brookefield

Gracious Living In North Raleigh • 919.676.5747

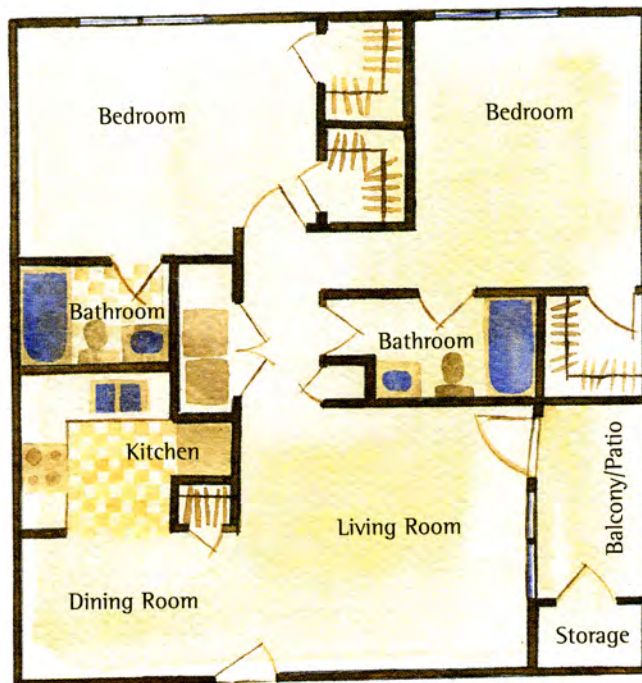


Located in desirable North Raleigh overlooking Roswell Lake and nestled among woods and rolling hills, Brookefield offers a comfortable and serene neighborhood atmosphere.

Enjoy an ideal location just one-half mile from I-540 near Triangle Town Center, RDU Airport, and Research Triangle Park. Take advantage of the solitude of a beautiful setting, numerous amenities, and perfectly designed floor plans. Come home to Brookefield for gracious living in North Raleigh.



One Bedroom: 685 Sq. Feet



Two Bedrooms: 1,006 Sq. Feet

Apartment Features

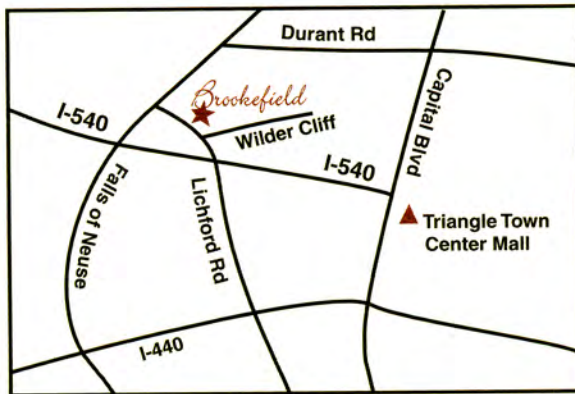
Choose a spacious one- or two-bedroom apartment home with built-in microwave, ceiling fans, large closets, breakfast bar, patios/balconies, and connections for a full-size washer and dryer. Here are just some of the features that set Brookefield apart from other apartment homes:

- Spacious floor plans
- Patios or balconies with storage rooms
- Prewired for cable in multiple rooms
- Private dining areas
- Linen closets
- Separate closets in master bedroom
- Energy efficient construction
- Built-in microwaves
- Dishwashers and disposals
- Connections for full-size washer and dryer
- Ample closet space
- Ceiling fans
- Frost-free refrigerators with icemakers
- Mini-blinds
- Oversized windows

Brookefield Apartment Community

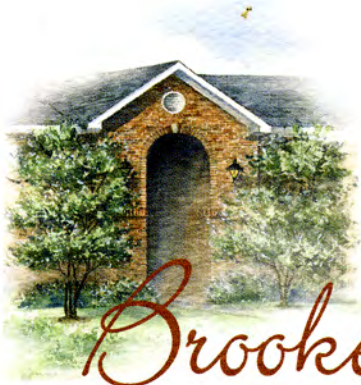
A pristine swimming pool and 24-hour fitness center and activity room overlooking Roswell Lake complete the overall feeling of gracious living. Located just one-half mile from I-540, Brookefield is convenient to shopping, schools, the RDU Airport, and Research Triangle Park.

- Great north Raleigh location
- 100% red brick exteriors
- Luscious landscaping
- Recycle area
- Complimentary video library
- Grills and picnic tables
- Fitness center and activity room
- Pristine swimming pool
- Public transportation
- Senior services provided
- Playground
- Car care center



From I-540, take the Falls of Neuse exit and turn left onto Falls of Neuse Road. Proceed north and at second stop light, turn right onto Litchford Road. Brookefield is situated approximately one-quarter mile on the left.

2400 Cluette Drive · Raleigh, NC 27615
Phone 919.676.5747 · Fax 919.676.5748
www.brookefieldapartments.com
e-mail lease@brookefieldapartments.com



Brookefield

Proximity to Points of Interest:

- I-540 - 1/2 mile
- RDU Airport - 7 miles
- Research Triangle Park - 9 miles
- Wake Medical Center - 2 miles
- Shopping Plaza - 1 mile
- Triangle Town Center - 4 miles
- Durant Park - 1 mile
- State Capitol - 11 miles

Achieve Your \$Dream\$...

Kenney Management LLC offers residents of all Kenney Communities participation in the Triangle's premier home purchase program. Achieve Your \$Dream\$ allows residents to earn monthly Dream Points which are converted to cash when either a new or existing home is purchased. Live in a Kenney Community, and let us help you achieve your dreams!

KENNEY
Properties

